



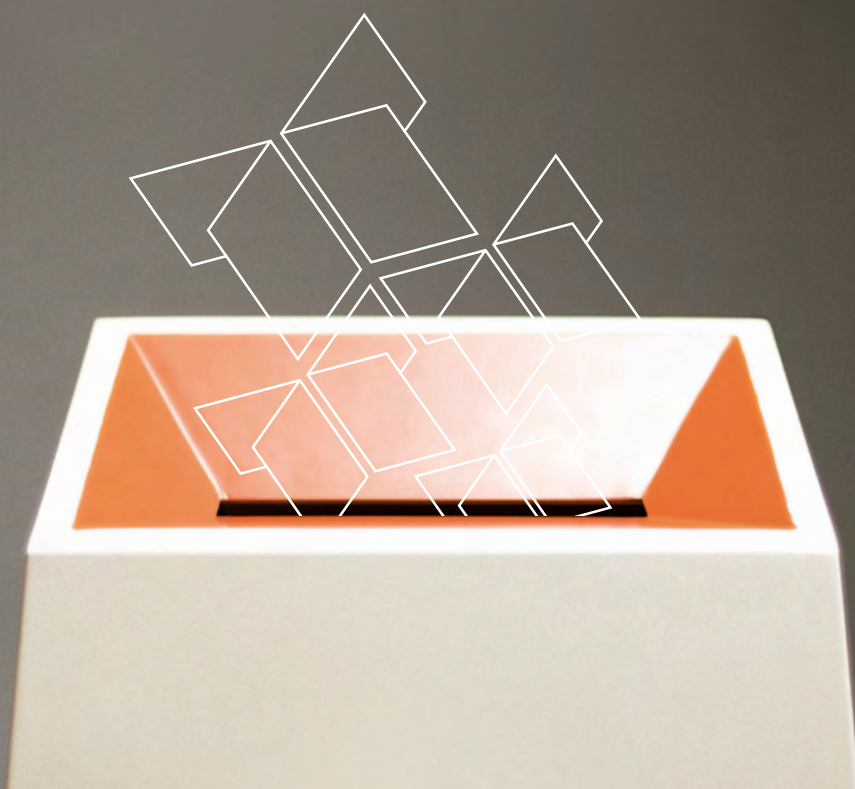
VALG

INFORMATION

English | Engelsk

Municipal and county council elections 2019

Important information for voters



Election day is Monday 9 September. Remember your identification!

VALGdirektoratet

Municipal and county council elections 2019

Elections enable us to choose who we want to represent us on our municipal council and our county council.

The municipal council is the municipality's supreme body. It is here that decisions are made on local matters such as kindergartens, child welfare, planning and land questions, primary and lower secondary schools, health and care services, cultural initiatives and refuse collection.

The county council is the county authority's supreme body. County councils make decisions on matters such as upper secondary school education, county roads and associated ferry routes, local public transport and cultural initiatives. Oslo will hold a municipal council election and elections to the district councils, but not a county council election.

It is these local matters that have the biggest impact on your everyday life. By voting you are helping to decide who will represent you and your interests on the municipal council and on the county council.

This brochure contains information on how to vote.

Election day is Monday 9 September 2019.

Many municipalities also hold elections on Sunday 8 September. The municipality will announce whether the election will last one or two days.

Remember to bring your identification when you vote

Examples of valid identification include a passport, driving licence or bank card with your photo. You can also use other types of identification. As a minimum, the identification must contain your name, date of birth and a photo. The Norwegian Representation of the People Act requires voters who are unknown to the polling officer to identify themselves.

If you are in an institution such as a nursing home, hospital or prison, you can get an employee of the institution to confirm your identity. In these circumstances, the employees must identify themselves.

All voters will be sent a polling card

The front of the polling card will contain information about the polling station you are registered at and its opening hours on election day. **You do not need to bring your polling card to vote, but doing so will save you time.** The polling card does not count as identification.

Who is entitled to vote?

- Norwegian citizens who will turn 18 years of age before the end of 2019 and who are, or have ever been, registered in the National Registry as resident in Norway.
- Citizens of another Nordic country (i.e. Denmark, Iceland, Finland or Sweden) who will turn 18 years of age before the end of 2019 and who are registered in the National Registry as resident in Norway at the latest on 30 June 2019.
- People who are not Norwegian citizens who will turn 18 years of age before the end of 2019 and who have been registered in the National Registry as resident in Norway for the last three years prior to election day.

Employees of the diplomatic or consular services, and their households, have the right to vote irrespective of whether they have been registered in the National Registry as resident in Norway or not. They do not need to apply for entry in the electoral register.

Voters must be entered in the electoral register in a municipality on election day in order to exercise their right to vote.

Where and when can you vote?

On election day, you must vote in the municipality in which you were registered as resident on 30 June 2019. You can vote in any polling station in the municipality. See the illustrations on the next page showing how to vote in your home municipality.

Advance votes can be cast from Saturday 10 August until and including Friday 6 September in any municipality in the country.

Voters who are unable to vote during the advance voting period or on election day may contact the municipality and vote during the period from 1 July until the advance voting period starts on 10 August.

If you vote outside of your home municipality, the ballot paper(s) you will receive will contain the names of the nationally registered political parties. You must place a cross in the box of the party for which you wish to vote. The ballot paper(s) will not contain the names of the parties' candidates and you will therefore be unable to cast personal votes.

If the party or group you want to vote for is not listed on the ballot paper, you can write the name of the party/group on the ballot paper. You can also obtain a ballot paper from your municipality yourself and use that if you wish to cast personal votes for candidates.

If you are voting from outside your municipality, you must ask a polling officer to stamp the ballot paper before putting it in a ballot paper envelope. The ballot paper envelope and polling card will then be put in a cover envelope by the polling officer. You must then put the cover envelope in the ballot box.

If you have not brought a polling card with you, the polling officer will fill one in for you. The vote is sent to your home municipality for counting.

The same applies **if you vote outside your home county in the county elections.**

If you are ill or disabled, you can apply to the municipality to vote in advance from home. The municipality will inform you of the applicable deadline.

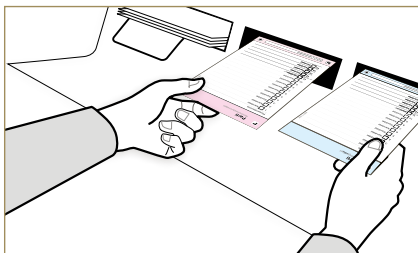
If you are registered in the National Registry as resident in a municipality or county affected by the municipal and regional reform, you will be electing representatives to the municipal council of your new municipality and the county council of your new county.

The municipality will tell you where the polling stations are and their opening hours.

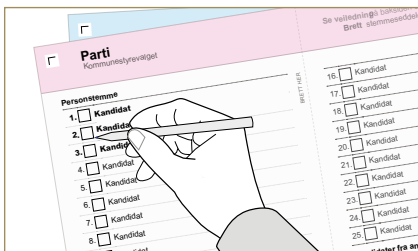


You will also be able to find your polling station online from August at:
valglokaler.no

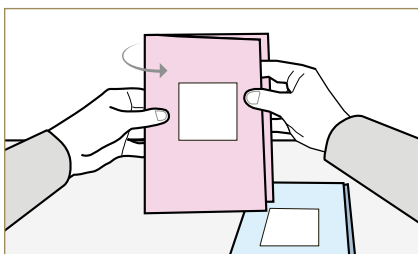
How do you vote in your home municipality?



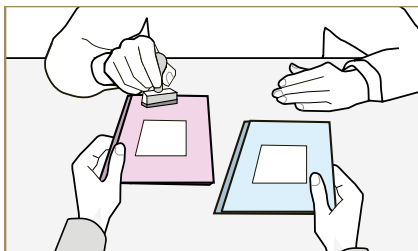
1) Take the ballot paper(s) you want to use: one for the municipal council election and one for the county council election, if you want to vote in both of these elections.



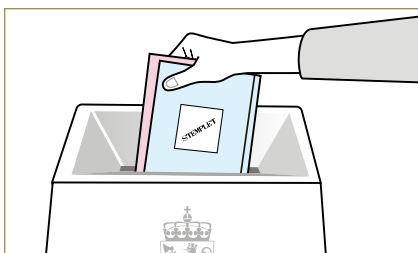
2) To cast personal votes, place a cross in the box next to the list candidates on the ballot paper to whom you want to give a personal vote. You can give a personal vote to as many candidates as you want (see the guidance on the next page).



3) Fold the ballot paper(s) so the party names are on the inside and the field for stamping is on the outside – this prevents anyone seeing how you have voted. Do not put the ballot paper(s) in an envelope or any other cover.



4) Go to a polling officer and have the ballot paper(s) stamped. This is important for the vote to be approved.



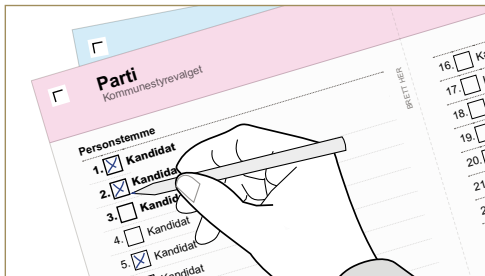
5) Place the ballot paper(s) in the ballot box.

Oslo will hold a municipal council election and elections to the district councils, but not a county council election. If you are entered in the electoral register in Oslo and want to vote in the district council election, you can either use a ballot paper for the district council election that you have brought with you or write the name of the party/group you are voting for on a blank sheet of paper. If you use a blank sheet of paper, you must also write on it that the paper concerns the district council election.

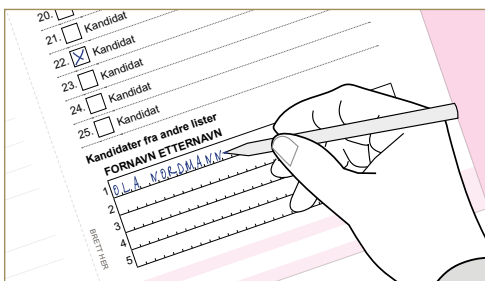
You can make changes to the ballot paper

If you want to influence which candidates are elected, you can cast personal votes for the candidates you want to receive such a personal vote. It is up to you whether you want to make changes to the ballot paper by giving personal vote(s). The procedure for casting personal votes is described on the ballot paper.

Casting a personal vote:

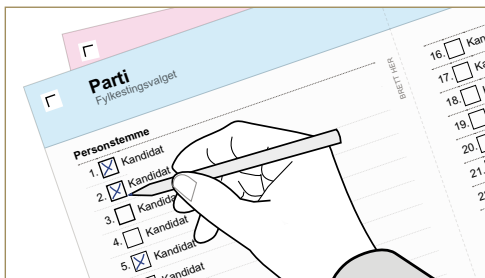


1) Place a cross in the box next to the name of the person you want to give a personal vote to. You can cast a personal vote for as many candidates as you want.



2) Write in candidate names from other parties/groups in a separate field on the ballot paper. The number of candidate names you can add is stated on the ballot paper.

Please note that, if you cast a personal vote for a candidate from another party/group, a so-called list vote will be transferred to the other party/group. This may affect the distribution of mandates in the municipal council.



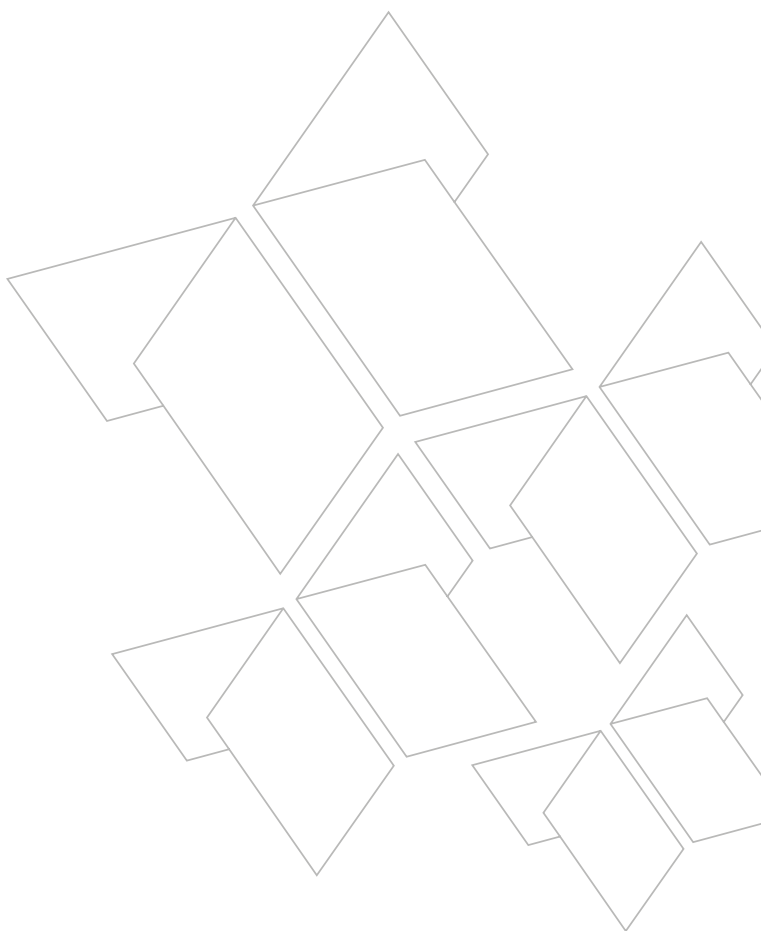
In county council elections:

Place a cross in the box next to the name of the person you want to give a personal vote to. You can cast a personal vote for as many candidates as you want.

Who will be elected?

The electoral committee will first determine how many representatives the various parties or groups will each get on the municipal council or on the county council. The electoral committee will then count the personal votes to find out which candidates have been elected from each party or group.

You can find more information on valg.no



Published in 2019 by the Norwegian Directorate of Elections.

This brochure is also available in Bokmål, Nynorsk, Sami and ten other languages.

For more information about the election, see **valg.no**